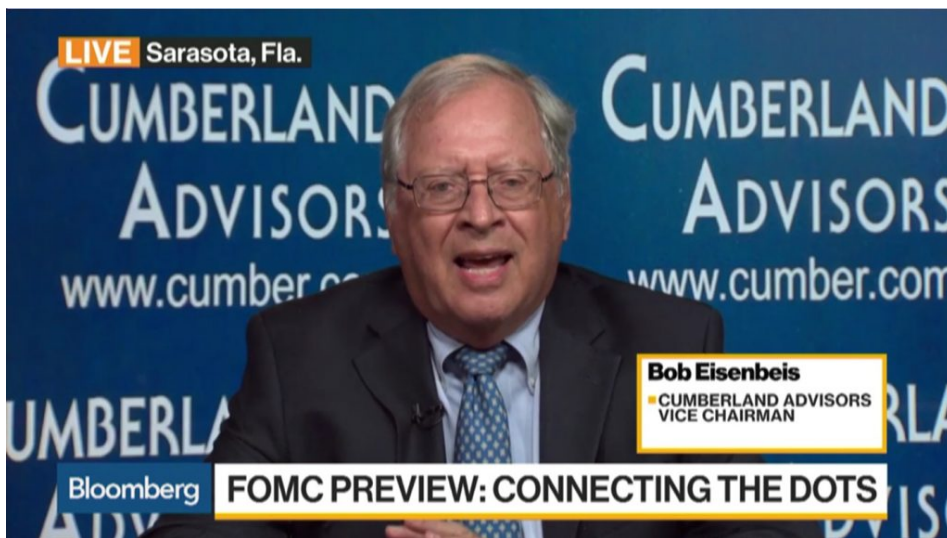


Fed Expected to Say Policy Will Be 'Data Dependent,' Cumberland's Eisenbeis Says

Robert Eisenbeis, vice chairman of Cumberland Advisors and a former Atlanta Federal Reserve research director, talks about the central bank's policy.



He speaks with Shery Ahn and Haidi Stroud-Watts on “Bloomberg Daybreak: Asia.” (Source: Bloomberg)

Direct link to video:
<https://www.bloomberg.com/news/videos/2018-09-26/fed-expected-to-say-policy-will-be-data-dependent-cumberland-s-eisenbeis-says-video>

Links to other websites or electronic media controlled or offered by Third-Parties (non-affiliates of Cumberland Advisors) are provided only as a reference and courtesy to our users. Cumberland Advisors has no control over such websites,

does not recommend or endorse any opinions, ideas, products, information, or content of such sites, and makes no warranties as to the accuracy, completeness, reliability or suitability of their content. Cumberland Advisors hereby disclaims liability for any information, materials, products or services posted or offered at any of the Third-Party websites. The Third-Party may have a privacy and/or security policy different from that of Cumberland Advisors. Therefore, please refer to the specific privacy and security policies of the Third-Party when accessing their websites.

Sign up for our [FREE Cumberland Market Commentaries](#)

Cumberland Advisors Market Commentaries offer insights and analysis on upcoming, important economic issues that potentially impact global financial markets. Our team shares their thinking on global economic developments, market news and other factors that often influence investment opportunities and strategies.